



# INDIAN SCHOOL SALALAH

SECOND TERM EXAMINATION – FEBRUARY – MARCH 2023



Class : VII

SCIENCE

Time: 3Hrs

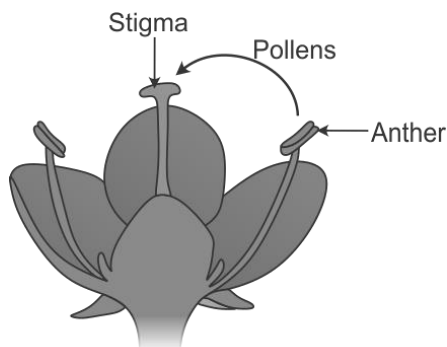
Maximum Marks:80

## General Instructions:

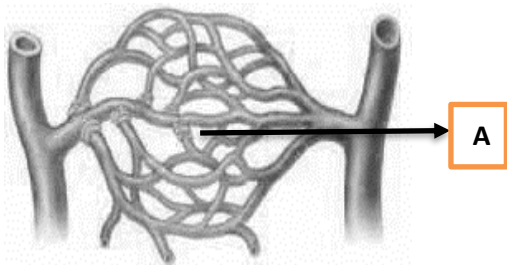
- i) *This question paper consists of 4 pages with 37 questions in all.*
- ii) *All questions are compulsory.*
- iii) *Questions 1- 13 in section A carry 2 marks each.*
- iv) *Questions 14- 22 in section A carry 3 marks each.*
- v) *Questions 23- 25 in section A carry 5 marks each.*
- vi) *Questions 26- 37 in section B are multiple choice questions. Each question carries 1 mark. You are to select one most appropriate option out of the four provided.*

## SECTION A

1. a) What is Time period.  
b) Which type of motion is exhibited by the simple pendulum?
2. Name the breathing organs in  
a) Cockroach            b) Earthworm
3. In a pond green coloured patches were found on the surface.  
a) What are these green coloured patches?  
b) How did this green material spread all over the pond surface?
4. Observe the figure given



- a) Define pollination.
- b) Identify the type of pollination shown in the figure.
5. Sometimes a person's kidneys may stop working due to infection or injury. Such persons cannot survive unless their blood is filtered periodically through an artificial kidney.
- a) What happens in the body when there is a kidney failure?
- b) The process of blood filtration using an artificial kidney is called \_\_\_\_\_
6. a) Give two uses each of concave mirror.
- b) What is a real image?
7. a) Define breathing rate.
- b) We breathe faster after a heavy exercise. Give reason.
8. a) Why are LED bulbs much preferred nowadays?
- b) Why is an electric fuse required in all electrical appliance?
9. "Breathing involves the movement of the diaphragm and the rib cage".  
What are the changes observed in the ribs and diaphragm during inhalation and exhalation.
10. a) Expand MCB.
- b) Write any one advantage of MCB.
11. Observe the given figure.



- a) Label the part marked as 'A'
- b) Name the only artery that carries carbon dioxide-rich blood.
12. a) Define speed.
- b) Give the SI unit of Speed.
13. Write any two characteristics of the image formed by a plane mirror.
14. a) The distance between two stations is 640 km. A train takes 8 hours to cover this distance. Calculate the speed of the train.
- b) What is the standard unit of time?

c) Name the device used to measure the distance travelled by the vehicles.

15. In plants, there is no specific organs for respiration. Each plant part can respire independently. Justify.

16. a) What is an Electromagnet?

b) Write any two uses of Electromagnet.

17. a) Name the three types of blood vessels.

b) Mention their functions.

18. a) How are muscle cramps produced?

b) What can be done to get relief from Muscle cramps?

19. “Spores” are means of asexual reproduction

a) Name two plants that reproduce by spore formation.

b) Why are these spores able to survive in harsh condition also?

20. a) The word Ambulance is written in a strange manner on the hospital vans. Why?

b) Identify the types of lenses given below.



(a)



(b)

c) What is Dispersion of light?

21. Mention the main excretory product in

a) Humans    b) Fish    c) Snakes

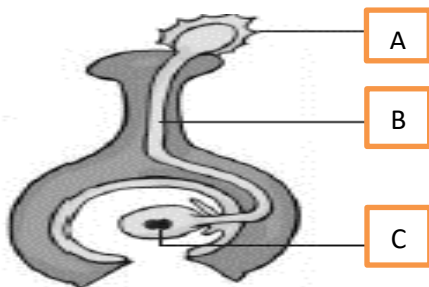
22. a) Name the organism in which reproduction takes place with buds.

b) How does the process take place . Explain with the help of diagram

23. a) Write the difference between Aerobic and Anaerobic respiration. (Four points)

b) Name the tiny pores on the lower surface of a leaf that allow the exchange of gases.

24.

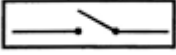


a) Label the parts A,B and C

b) Identify the process shown in the figure. Explain the process

25. a) Explain the Human Excretory system with the help of a neat labelled diagram.  
b) Define Transpiration.

**SECTION -B**

26. Which symbol of the electrical component is represented here? 
- a) Switch in the ON position                      c) Circuit breaker  
b) Switch in the OFF position                    d) Battery
27. Which one of the following is based on the heating effect of electric current?
- a) Geyser    c) Immersion rod  
b) Hairdryer                                        d) All of these
28. The vascular tissue responsible for the transport of water and nutrients in the plant is
- a) Phloem    c) Vascular bundles  
b) Xylem     d) Leaves
29. Which of the following contains Haemoglobin?
- a) WBC    c) RBC  
b) Platelets                                        d) None of these
30. A simple pendulum takes 48 s to complete 20 oscillations. What is the time period of the pendulum.
- a) 1.4 s    c) 1.6 s  
b) 2.4 s    d) 3 s
31. Breathing rate in human beings in normal condition is
- a) 12-15 times in a minute                    c) 18-22 times in a minute  
b) 15-18 times in a minute                    d) 22-25 times in a minute
32. Vegetative propagation is a type of
- a) Asexual reproduction                        c) Binary fission  
b) Sexual reproduction                         d) None of these
33. Yeast is used in wine and beer industries because it respire.
- a) Aerobically producing oxygen            c) Anaerobically producing alcohol  
b) Aerobically producing alcohol            d) Anaerobically producing CO<sub>2</sub>

34. The flower which contain either pistil or stamen is called
- a) Unisexual flowers
  - b) Asexual flowers
  - c) Bisexual flowers
  - d) None of these
35. An aircraft flying at a constant speed is an example of -----
- a) Periodic motion
  - b) Uniform motion
  - c) Non-uniform motion
  - d) Circulatory motion
36. Zygote develops into
- a) Seed
  - b) Embryo
  - c) Stamen
  - d) Pistil
37. What is the function of WBC?
- a) Transport of oxygen
  - b) Fight against germs
  - c) Involved in blood clotting
  - d) None of these